

70 years developing the pumping technology that moves our world

Ruhrpumpen is an innovative and efficient pump technology company that offers highly engineered, custom made solutions for oil & gas, chemical processing, power generation, industrial applications and water.

Implementation of cutting-edge technology and world-class engineering, combined with our unique vertically integrated structure, allows Ruhrpumpen to design complex technical solutions, creating the most robust and powerful pump systems in the marketplace.

Our broad product line complies with the most demanding quality standards and industry specifications such as **American Petroleum Institute (API), American National Standards Institute (ANSI), Underwriter's Laboratories (UL), Factory Mutual (FM), National Fire Protection Association (NFPA), ISO and Hydraulic Institute.**

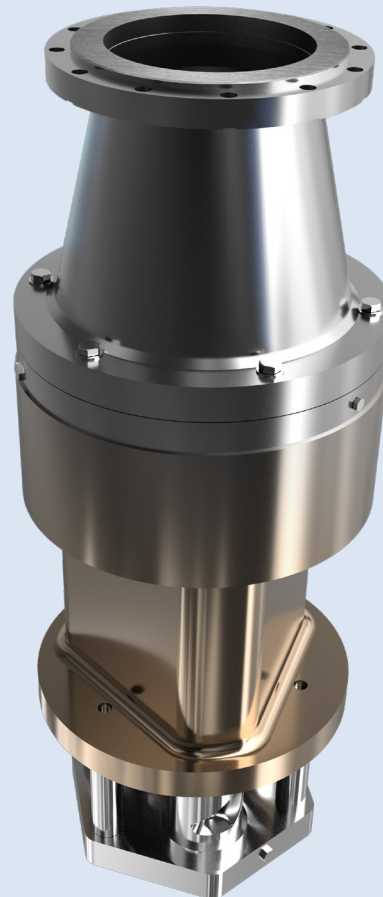
Products Include:

- Single stage overhung pumps
- Vertical in-line pumps
- Single and multi-stage between bearing pumps
- Multi-stage vertical pumps
- Reciprocating plunger pumps
- Sealless magnetic drive pumps
- Fire protection systems
- Pitot tube pumps
- Hydraulic decoking systems
- Self-priming pumps
- Vertical mounted positive displacement pump

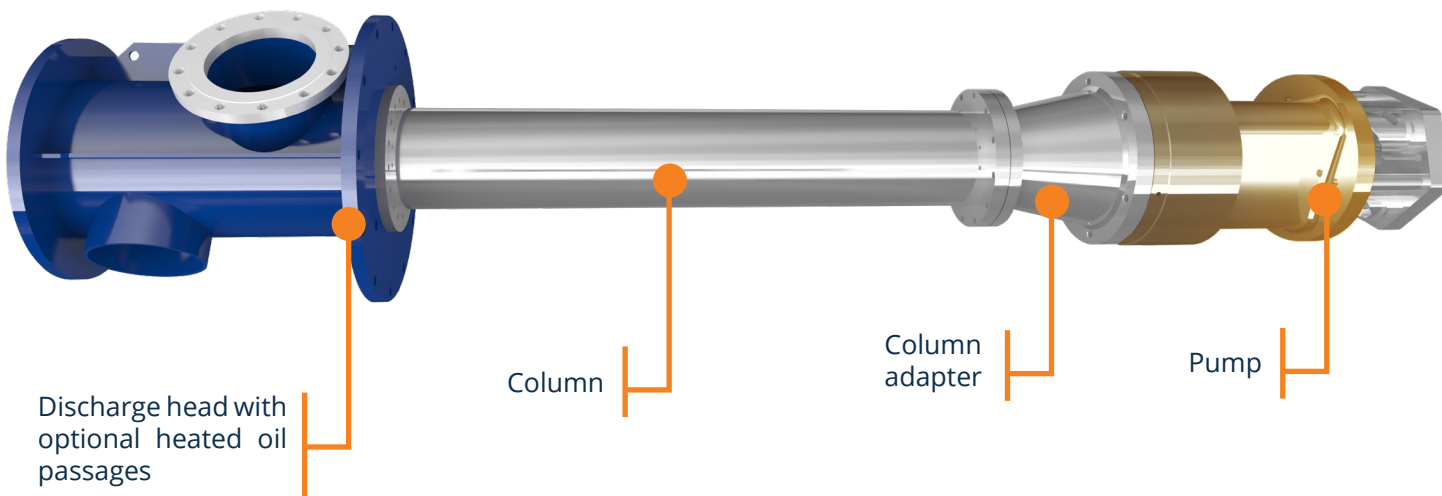
LSS - Design expertise, Operating Efficiency and Proven reliability.

The LSS vertical Mounted positive displacement pump provides predictable performance for all variations of cargo characteristics and dockside piping arrangements.

- Fits most common size deepwell (24-inch diameter or larger) on inland and ATB barges.
- Utilize standard deepwell head and columns.
- Eliminate the need to heat product to acceptable centrifugal pump viscosities.
- High suction lift capability for total stripping of tank.
- Versatility in product handling from light #2 oil to Asphalt.
- Increased reliability and longer service life due to hydraulically balanced design.



Sectional View



Barge Screw Pump

- Pressure: To 150 PSIG
- Temperature: To 300° F
- Driver speed 1800 RPM

